

ASSEMBLY INSTRUCTIONS

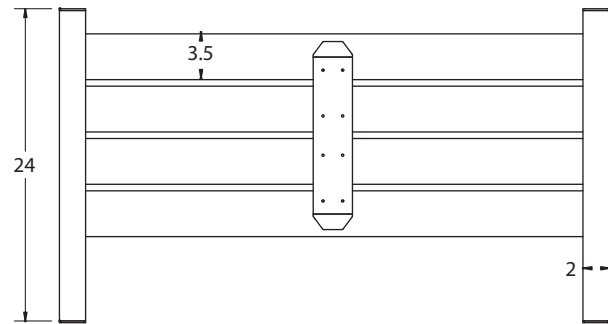
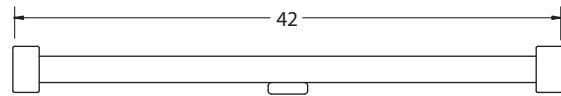
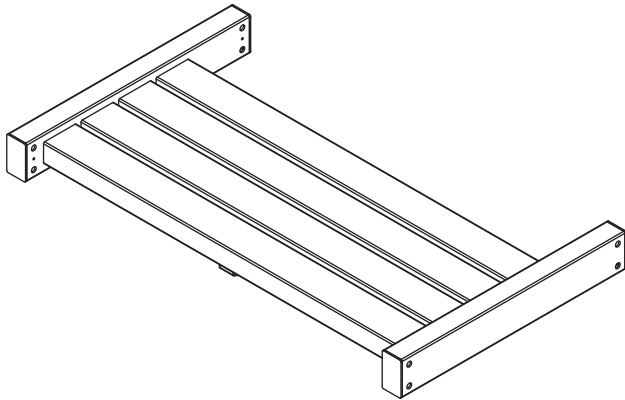
Eden™

Enduring Garden Architecture
www.edenarbors.com

The Cozy Arbor Bench

Designed to be Installed with the Monaco, Vienna and Florence Arbors

(Purchase Separately)

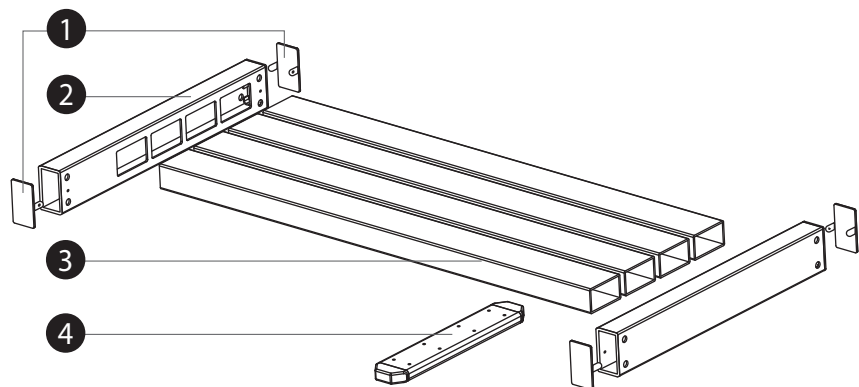


Please read through before starting assembly.

Check Box for These Contents

In the event of missing or defective parts please call our customer service dept. at **1 800 282 9346, ext #20** (Mon. to Fri. 8:00 AM to 4:00 PM EST).

1. End Closure Caps (for Bench Supporting Arms) (4)
2. Bench Supporting Arms (2)
3. Bench Slats (4)
4. Bench Supporting Slat (1)
5. Hardware (in plastic bag)
 - a) 1/2" x 5 1/2" Galvanized Steel Hollow Dowels (8)
 - b) 3/8" Dia x 6" Long Galvanized Carriage Bolts (8)
 - c) 3/8" Galvanized Locking Washers (8)
 - d) 3/8" Galvanized Nuts (8)
 - e) 1 1/2" Self-Auguring Stainless Steel Screws (12)
 - f) 1/2" Drill Bit (1)

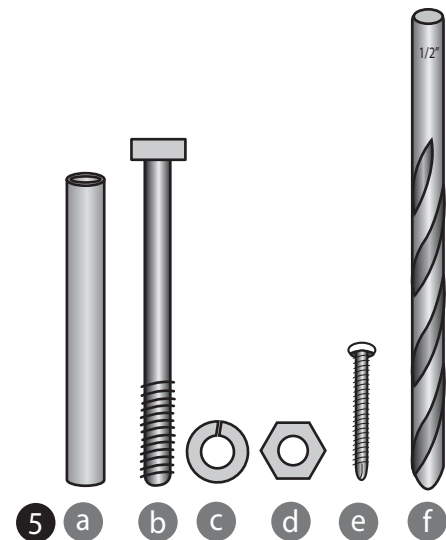


Tools You Will Need

- Cordless Drill
- Hammer
- Level

General Information

- **Read Instructions through carefully before beginning assembly.**
- When assembling components, place on a non-abrasive surface (i.e. shipping box) to avoid scratching.
- We recommend an area approx 4'x 8' for unobstructed assembling.
- You should not need to use excessive force when assembling components.



Not to Scale

STEP ONE

Drill the Arbor Posts

1

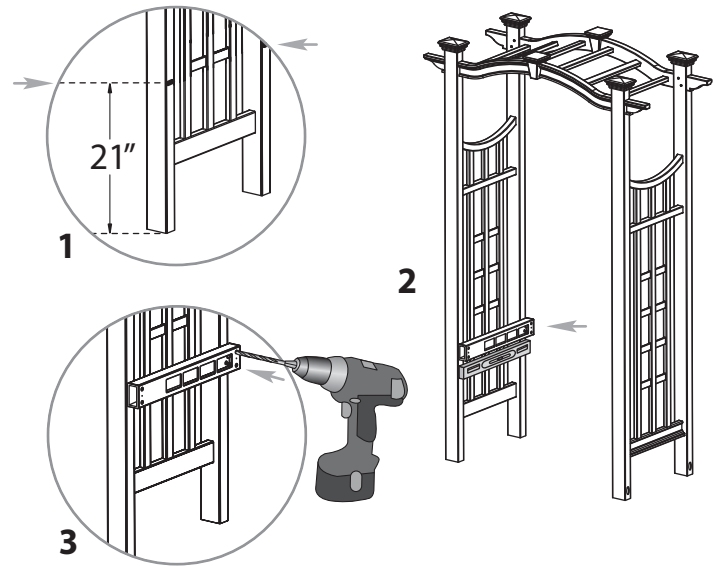
Identify a marking line at 21" above the ground on all the arbor posts.

2

Align the top of the bench supporting arms with the marked lines (check to determine level) and identify the drill points necessary for the supporting bolts.

3

Drill out the holes accordingly.



STEP TWO

Assemble the Bench

1

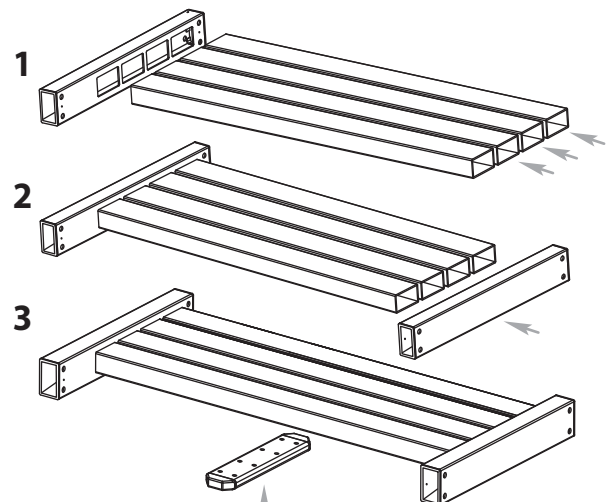
Layout one supporting arm and insert the four bench slats.

2

Slide the other supporting arm over the exposed end of the four bench slats.

3

Attach the supporting bench slat on the underside of the bench at the midpoint - invert as necessary (2 screw points are included per bench slat for a total of eight).



STEP THREE

Connect the Assembled Bench to the Arbor Posts

(Two people required for this step).

1

Align the bench supporting arms with the pre-drilled holes (made in Step #1), on the posts. The four bench slats should be positioned towards the back of the arbor.

2

Slide steel galvanized hollow dowels thru the supporting arms and into the posts (this may require a hammer).

3

Insert carriage bolts from the inside of the arbor posts through the supporting arm and install lock washer and nuts accordingly.

4

Insert closure cap and install screw in pre-drilled hole to lock the cap unto the bench supporting arms. Repeat accordingly.

